

Let's Explore

In small groups explore our Heritage Centre using this trail.

We've divided it into 7 sections which you can do in any order.

First, find the object or photograph. There's some information about it to read first. Then there are two or three activities for you to do.

There's no rush and you will probably find other things that you'll find interesting.

Mining



Find the piece of shiny rounded iron ore in the display case. Why do you think it's called kidney ore?

Mining (coal and ironstone) was big around here. Quarrying too. These are the remains of two tubs from the Hareshaw Iron Works. If you are walking up to Hareshaw waterfall you'll pass the remains of the Iron Works and the embankments for the wagonways bringing coal, ironstone and limestone down to the Works.

- 1** Look **above** to see a reconstruction of one of the tubs. How do we know this is what they looked like?
- 2** Feel the samples of ironstone. How heavy are they? How are they different? What has happened to the stone when the iron has been melted out?
- 3** Crawl through the tunnel **below**. Then talk about what it would be like to work inside there for several hours. (Hot, damp, dark, confined, rough surfaces, heavy work. Look at the black and white print on the floor showing a miner at work in a narrow seam of coal.)

Farming



Find the turnip chopper. Why do you think turnips were chopped up and what would eat them?

Farming is what most people did around here.
Today it's mainly sheep farming.

- 1** How many animals can you see in the old photographs?
- 2** What were the animals used for?
- 3** How did women and children help on the farm?
- 4** Listen to one or more people talk about different aspects of farming.
(Play only one at a time. Each lasts 3 minutes.
Switch off if you don't want to listen to it all.)

The smithy

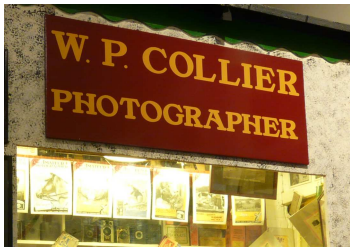


Find what the blacksmith drank when he was thirsty.
(Bottle of pale ale.)

The blacksmith was an important person in this area.
He fixed lots of things. But he needed many tools.

- 1** Sit on the bench and watch the video.
- 2** Look for tools that were used for cutting, bending, twisting, heating, fastening, gripping, carrying and hammering.
- 3** Behind you are objects and furniture from an old classroom from a nearby school.
How many of these are in your classroom?
How many are in the line drawing of a classroom 100 years ago?

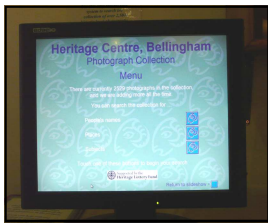
Collier's photography shop



Walter Percy Collier was a famous local photographer. He lived in the village from 1911 to 1937. This is a reconstruction of his shop.



- 1** Find something that Collier would not have used to take photographs (mobile phone). Compare how photographs were taken - (film, developing, dark room, printing etc).
- 2** Opposite his shop is a shelf of old cameras. You can pick them up and use them (with care). 'Take a picture' of something you find interesting nearby to remind you of your visit to the Heritage Centre (please put the cameras back on the shelf).



- 3** Use the two computers to see more of his photographs. Choose a theme and explore the database.

Steel bonnets/border reivers



Reiving (raiding) was common around this area from around 1300 to 1600. Families either side of the Border would ride out in gangs at night to steal from each other. They'd kidnap people too - for ransom!

- 1** You can try on three different helmets behind this display model. Work out how the helmets protected the head, face, neck, ears and nose from attack.
- 2** You'll also find replica shields. Hold, lift and examine.
- 3** Press the buttons (**one at a time**) to find out where the reiving families came from.

What does the spur on the dish mean?
(Message to the men; there's no food left so go out and get some!)

Station platform



This photograph in the window of the second carriage shows what the station looked like 90 years ago.

- 1** Look up and down the platform to find what is left of the station. (Mind the gap between the platform and carriage.)
- 2** Go into the Heritage Centre and find the railway map showing where the line went to. (It's on the door in the left corner below the red signal.)

Find the graffiti on a door inside the Heritage Centre. (Children wrote their weight after weighing themselves on the platform scales.)

- 3** Then, buy a ticket from the replica ticket booth nearby. (Use this activity panel below the ticket office window.)



Brown Rigg School



- 1** Turn the pages of this exhibition to find out more about this school.
- 2** How different is Brown Rigg School to your school?
- 3** What lessons can you see children doing?
What did children do in their spare time?
What were the dormitories (bedrooms) like?

Find the names of the dormitories which children slept in. (Many are rivers)